

Rera No.: RAJ/P/2022/1970
Website: <http://rera.rajasthan.gov.in>

A new *Project* by



A K A N S H A

Akansha
DEEP HOMES

A distinct Shopping Address for the **New Kota**

Shop | Kiosks | Offices | Food | Hypermart

Price starting from
₹ **16Lakh** onwards

A new *Project* by



A K A N S H A



www.akanshadeepheights.com

About Location

Located near to NH 52, NH 27 and Kota Bypass which is the fastest growing area of the region, What gives "Akansha Deep Homes" on edge is that it is set amidst high density posh residential colonies, New Medical College & Hospital, School & Local Markets thereby ensuring a sustained high rate of footfalls from a high end capital catchment area. This location is hub of residential colonies, coaching centers, Stone Industry & Cloths with world class technology and infrastructure.

बेहतरीन लोकेशन, उत्कृष्ट कंसट्रक्शन
क्वालिटी एवं समय पर डिलीवरी

KEY PROJECT HIGHLIGHTS

- Located on Main road in front of Kota University & Near Govt. Medical College & Hospital.
- Approx 4000+ people reside above the market in the same building.
- Located in main dense populated area.
- Located on Corner Plot width 48 meter wide road & 24 meter wide road.
- Commercial Hub in 500 meter (GMA Plaza, New Cloth Market & Indra Market).
- Hub of Posh Colonies & multistorey building.
- Modern fire safety measurers.
- Double highted shops & showrooms.
- World Class Infrastructure.

Ideally Suited for **Shop**



- Cosmetics Stores
- Dry-Cleaning Shops
- Grocery Stores
- Departmental Stores
- Mobile Phone Store/Services
- Kid/Gents/Ladies Wear Stores
- Restaurants
- Travel Bags/Luggage Stores
- Jewellery Shops
- Electronics Stores
- Foot Wear Shops
- Medical Store/Chemist
- Gym/Spa & Saloon
- Gaming Parlours
- Boutique Shops

Experience Shopping



“Akansha Deep Homes” offers a unique shopping experience that was unknown to the township till now. Friends and family can enjoy shopping at this high-end shopping that offers you a variety of brands for everyone, ranging from regular commodities to luxury products and from designer garments to utilities...

“Akansha Deep Homes” will showcase some of the best brands in the retails segment and will be comparable to some of the best shopping places in the region. The showrooms are planned to provide wide open spaces and show windows for ease of shopping.



Ideally Suited for **Kiosks**

- Sunglasses/Opticals
- Ice-Cream Vends
- Express Saloons
- Books/Stationery Marts
- Art/Sculpture Vends
- Ladies Bags
- Bakes & Confectionary Vends
- Beauty Parlours
- Tattoo Makers
- Fast Food Vends
- Florists
- Lingerie Store
- Juice Corners
- Key Makers
- Gift Galleries



Ideally Suited for **Offices**



- Medical Clinics
- Chartered Accountants
- Tour & Travel Agencies
- Real Estate Agents
- Banks, Insurance Companies
- Packers & Movers
- Coaching Classes
- Construction Companies
- Cooking Gas Agencies
- IT Companies, Security Agencies
- Architects, Advocates
- Passport/Pan/Voter Card Services
- Laboratories
- Recruitment Agencies

Experience Office



Having an office address at “Akansha Deep Homes” in the midst of retail and entertainment areas is a unique experience by itself. large open space, access to world - class work environment are some of the highlights of Akansha Deep Homes. The surroundings provide an energy that will keep the people refreshed and rebooted all day long.

Besides this, offer a premium address all the international and local organizations that wish to relocate here.



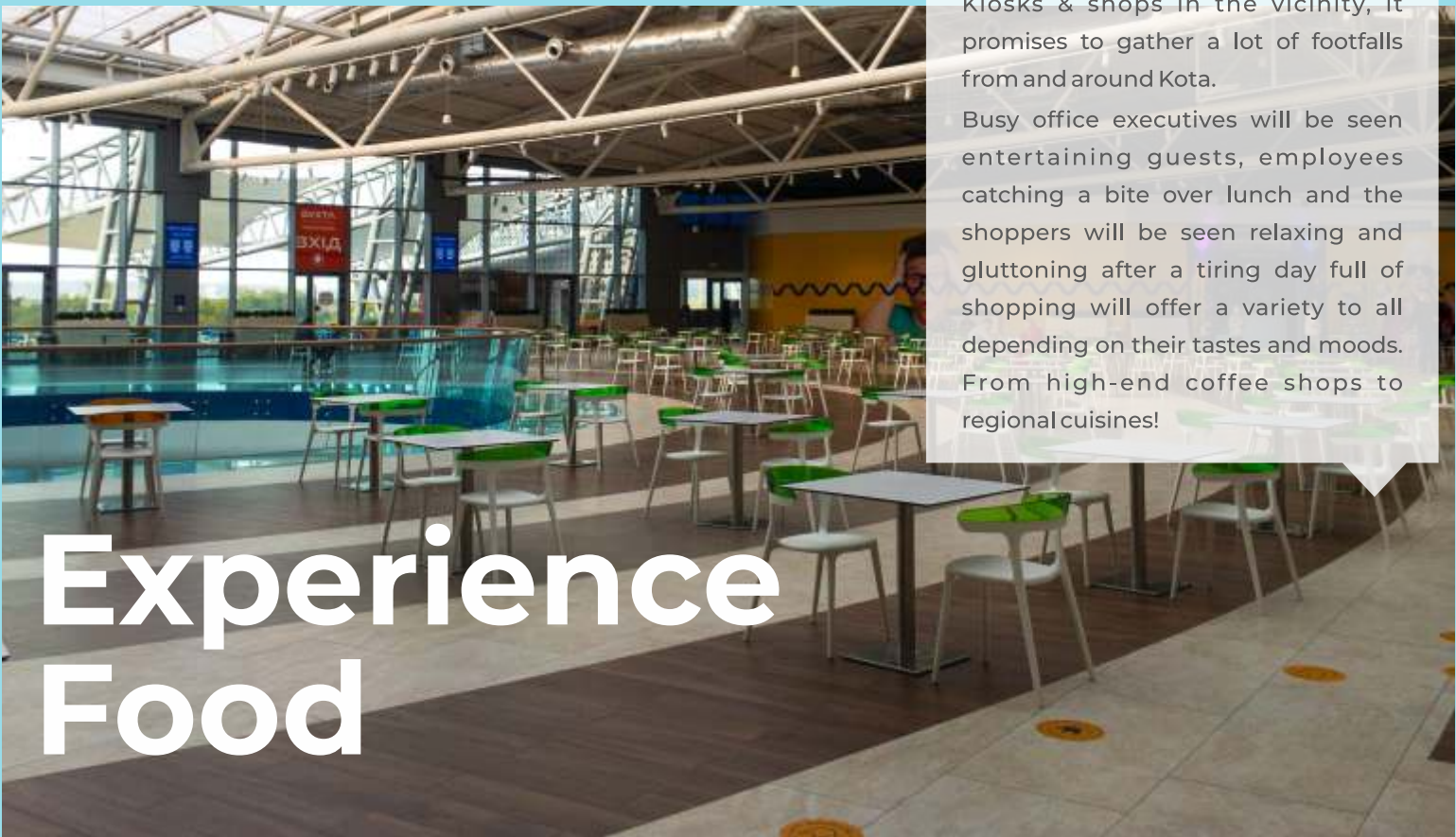
Ideally Suited for **Food**



- Multi Cuisine Restaurant
- Common Seating Area for Self Serving

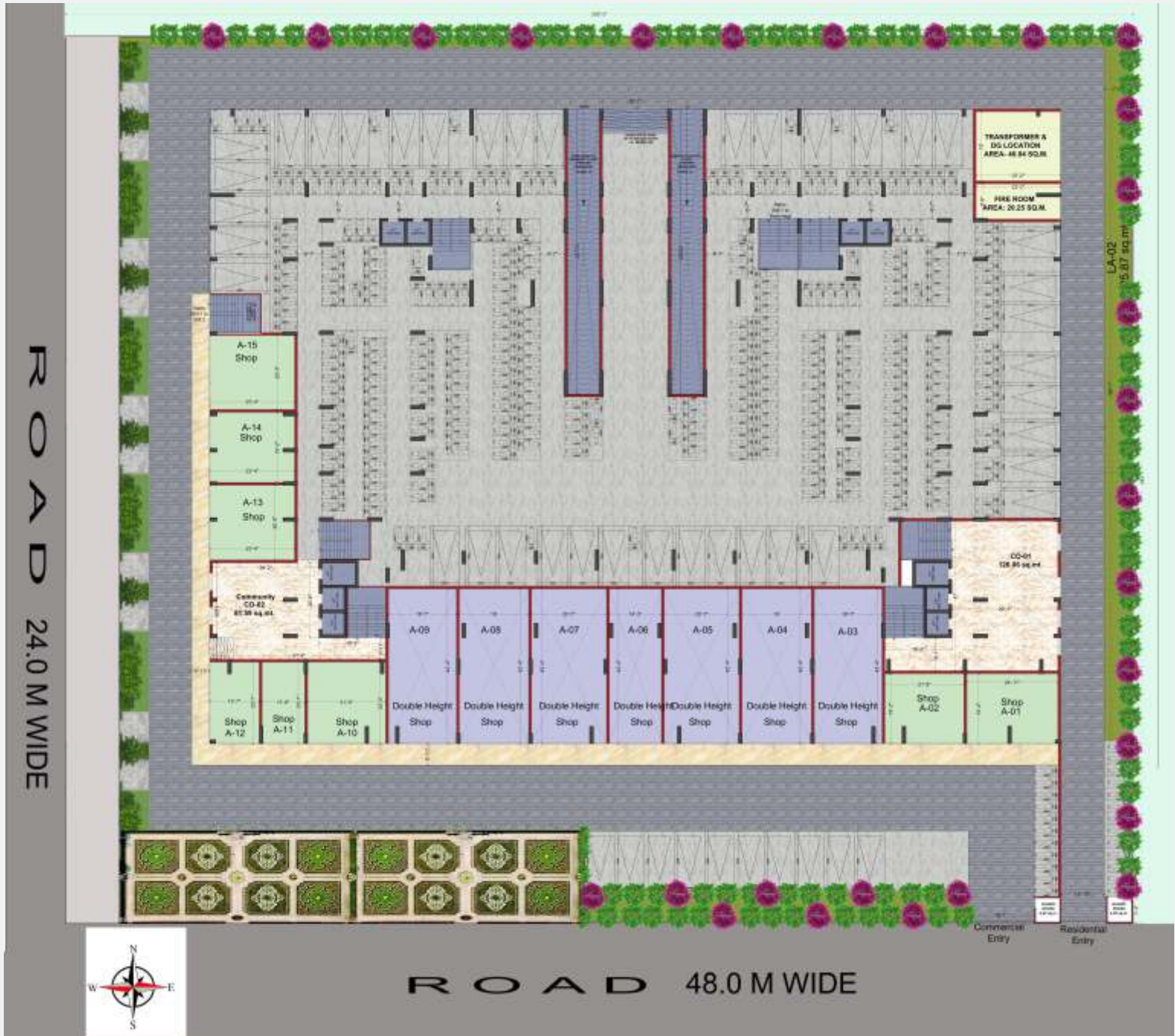
The shops at “Akansha Deep Homes” is designed to attract a large number of visitor, considering the catchment of offices and residential areas surrounded it. being one-of-a-kind Kiosks & shops in the vicinity, it promises to gather a lot of footfalls from and around Kota.

Busy office executives will be seen entertaining guests, employees catching a bite over lunch and the shoppers will be seen relaxing and gluttoning after a tiring day full of shopping will offer a variety to all depending on their tastes and moods. From high-end coffee shops to regional cuisines!

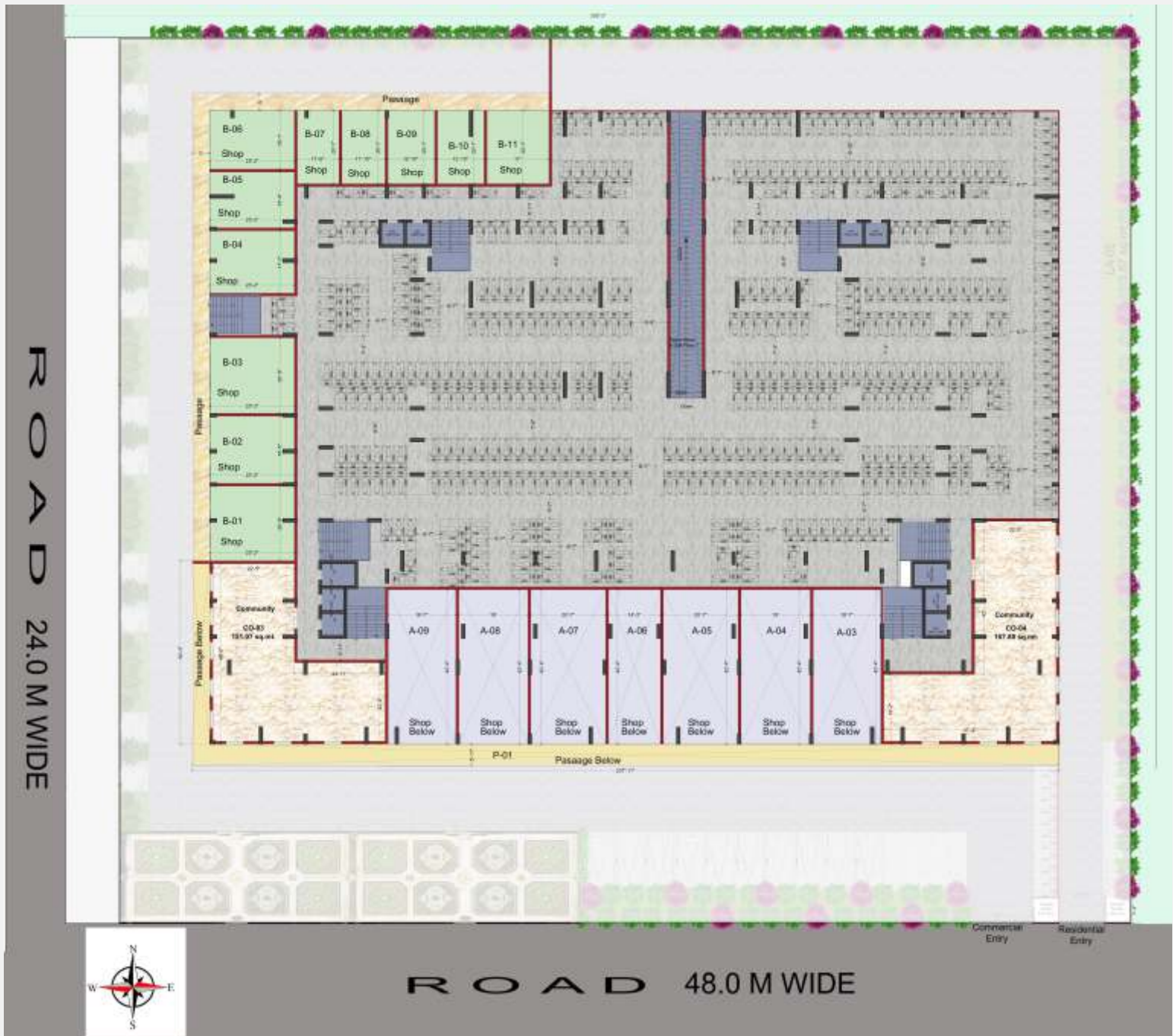


Experience Food

Stilt 1 Floor Plan



Stilt 2 Floor Plan





नए कोटा को
नयी सौगात



Specification

Structure

Reinforced cement concrete (RCC) controlled framed structure & Brick wall partitions with Earthquake Resistant Technology.

Shop/Kiosk

Flooring

Vitrified Tiles or equivalent

Walls

Plain Cement - Sand plaster with putty and external wall with weather proof paint.

Ceiling

Sand plaster with putty

Shop Front

MS Rolling Shutter painted with Enamel paint. Glass facade to all shops.

Office

Flooring

Vitrified Tiles or equivalent

Walls

Plain Cement - Sand plaster with putty and external wall with weather proof paint.

Ceiling

Sand plaster with putty

Doors

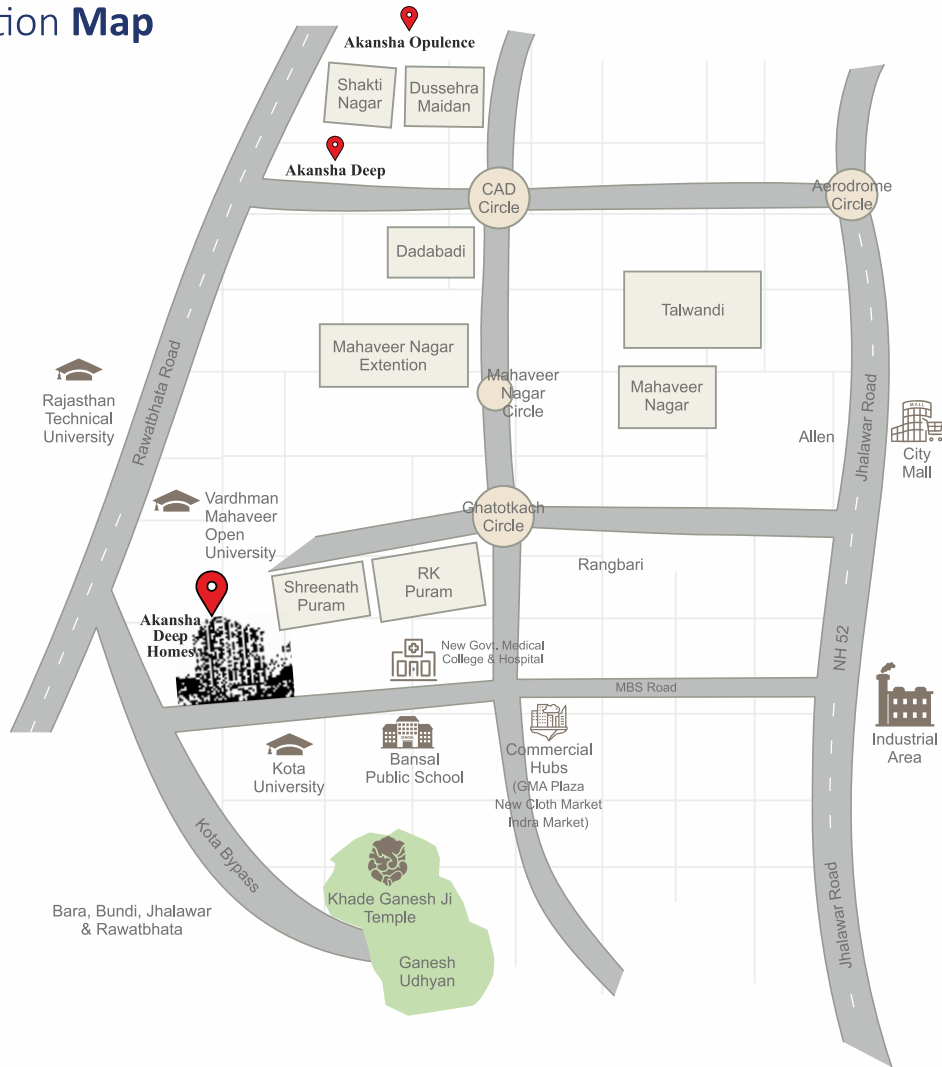
Flush Doors with Wooden/MS Chowkhat/UPVC.



Disclaimer:

The above specifications are tentative and can be changed at sole discretion of Developer only.

Location Map



A K A N S H A

Aakansha Infra Housing Projects

Plot No. 6, In Front of Kota University, Near Govt. Medical College

& Hospital, Vivekanand Nagar, Kota (Raj.) Mob.: +91 97733 77651, 97733 77652

Note:

- (1.) This brochure is purely conceptual and not a legal offering.
- (2.) The promoters/Architects reserve the rights to add/delete/alter any detail/specifications/elevation mentioned herein.